

# genuine spare parts

fast moving items



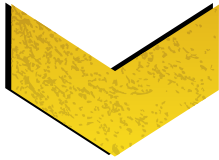
**X-BOX**

4X320W LED



**TRIME**

Lighting Tower Specialist



# X-BOX

4x320W LED



info contacts

+ 39 02 942 1724

info@trime.it

www.trime.it

## Mast & Floodlights spare parts



LED Floodlight 300W



Floodlight top support



Floodlight lower support



Anti-drag spacer




Multiposition handle



Junction box



Coiled cable



Bubble level



Mast rotation lock pin



Hydraulic cylinder




Led power connector



Mast rope L.1460 mm full eyelet



Mast rope L.1440 mm full eyelet



Mast rope L.1415 mm full / dug eyelet

---

Mast rope L.1385 mm full / dug eyelet




Angular runner



Angular runner reinforcement



Rubber handle



Pulley D.60

---

Pulley D.62

---

Pulley D.63

---

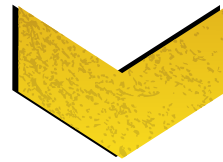
Pulley D.58

info contacts

+ 39 02 942 1724

info@trime.it

www.trime.it



**X-BOX**

4X320W LED

Hydraulic unit spare parts



Hydraulic tank cap



Electrovalve solenoid body



Electrovalve energizing coil



Electrovalve energizing coil plug



250Bar valve

Electrical spare parts



DSE3110 controller



Fuel level gauge



RCBO 13A



Lamp switch



Light sensor



Light sensor capacitor



Timer



8 modules cover



10 modules cover



Battery charger



Mast control buttons



1 poles switch



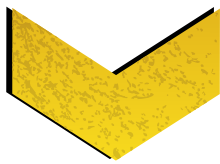
Generator/Mains selector



Inlet socket 230V 16A



Outlet socket 230V 16A



# X-BOX

4x320W LED



info contacts

+ 39 02 942 1724

info@trime.it

www.trime.it

## Electrical spare parts



Thermal circuit breaker



12V 70A relay



12V 30A relay



Contactor switch



Emergency stop button



Fuse holder



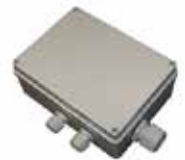
2A fuse



Earth post



Battery



Junction box

## Engine spare parts



25µF capacitor



Battery charger regulator



Engine Stop Timer



Fan belt



Air filter element



Cooling Water Expansion



Fuel filter



Fuel lift pump



Fuel pre-filter



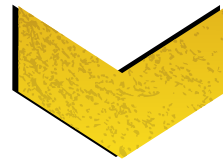
Engine oil drain pump

info contacts

+ 39 02 942 1724

info@trime.it

www.trime.it



**X-BOX**

4X320W LED

Engine spare parts



Oil drain pipe kit



Anti-vibration buffer



Oil filter

Chassis spare parts



Fuel tank cap



Fuel sender unit



Handle with lock



Door hinge



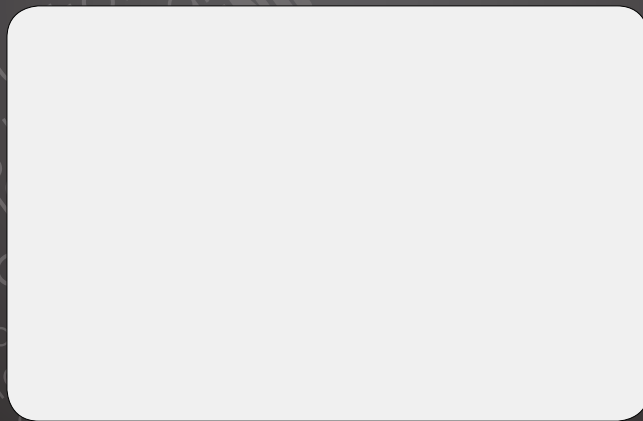
Stabilizer lock pin



Stabilizer beam



Stabilizer



# TRIME

Lighting Tower **Specialist**

**TRIME** s.r.l.

Strada per Robecco, snc

20081 Cassinetta di Lugagnano (MI) - ITALY

Tel. +39 02 942 1724

[www.trime.it](http://www.trime.it) - [info@trime.it](mailto:info@trime.it)