

genuine spare parts

fast moving items

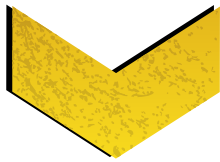


X-CHAIN
ATEX



TRIME

Lighting Tower Specialist



X-CHAIN ATEX

4x150W LED



info contacts

+ 39 02 942 1724

info@trime.it

www.trime.it

Mast & Floodlights spare parts



LED Floodlight 150W
ATEX



Anti-drag spacer



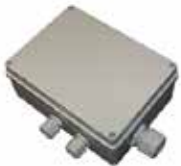
Multiposition handle



ATEX cable



ATEX plug



Junction box



Bubble level



Mast rotation lock pin



Mast winch



Mast winch handle



Mast rope L.4300 mm
full eyelet / free cable



Mast rope L.1170 mm
full / dug eyelet



Mast rope L.1200 mm
full / dug eyelet



Mast rope L.1210 mm
full / dug eyelet



Pulley D.58



Pulley D.60



Pulley D.62



Pulley D.63



Angular runner



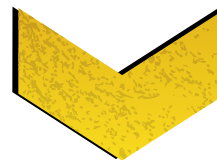
Angular runner
reinforcement

info contacts

+ 39 02 942 1724

info@trime.it

www.trime.it



X-CHAIN
ATEX

4x150W LED

Chassis spare parts



Stabilizer lock pin



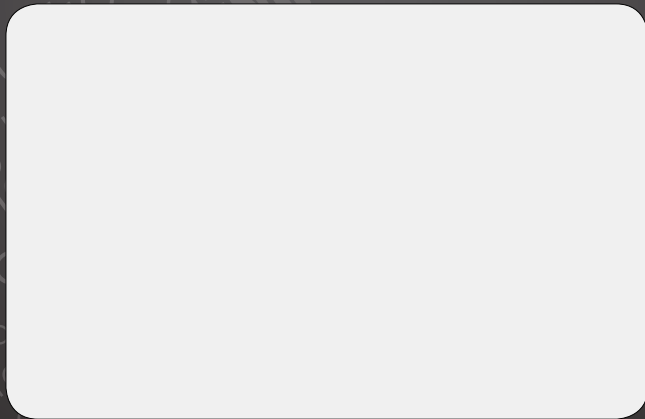
Stabilizer beam



Stabilizer



Wheel



TRIME

Lighting Tower **Specialist**

TRIME s.p.a.

Strada per Robecco, snc

20081 Cassinetta di Lugagnano (MI) - ITALY

Tel. +39 02 942 1724

www.trime.it - info@trime.it