

genuine spare parts

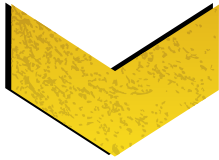
fast moving items

X-CHAIN
ANTI-GLARE
4X150W LED - 7M



 **TRIME**

Lighting Tower Specialist



X-CHAIN

4x150W LED



info contacts

+ 39 02 942 1724

info@trime.it

www.trime.it

Mast & Floodlights spare parts



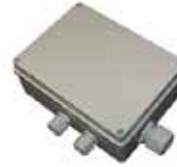
Anti-glare floodlight
150W



Anti-glare floodlight
bracket



Led driver power
supply



Junction box



Coiled cable



Bubble level



Mast rotation lock pin



Mast winch



Mast winch handle



Mast rope L.4300 mm
full eyelet / free cable



Mast rope L.1170 mm
full / dug eyelet



Mast rope L.1200 mm
full / dug eyelet



Mast rope L.1210 mm
full / dug eyelet



Angular runner



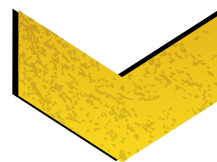
Angular runner
reinforcement

info contacts

+ 39 02 942 1724

info@trime.it

www.trime.it



X-CHAIN

4x150W LED

Mast & Floodlights spare parts



Pulley D.58



Pulley D.60



Pulley D.62



Pulley D.63

Electrical spare parts



RCBO 13A



Lamp switch



Astronomical timer



Light sensor 230V



Light sensor capacitor



8 modules cover



10 modules cover



Inlet plug 230V 16A



Outlet socket
230V 16A



Inlet plug 230V 32A



Outlet socket
230V 32A



Outlet socket 230V
16A Shuko



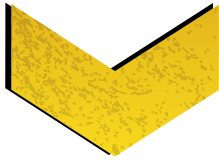
Inlet plug 110V 32A



Outlet socket
110V 32A



Selector



X-CHAIN

4x150W LED



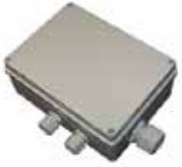
info contacts

+ 39 02 942 1724

info@trime.it

www.trime.it

Electrical spare parts



Junction box



Current transformer



Earth post

Chassis spare parts



Stabilizer lock pin



Hinge



Door rubber lock



Stabilizer beam



Galvanized stabilizer



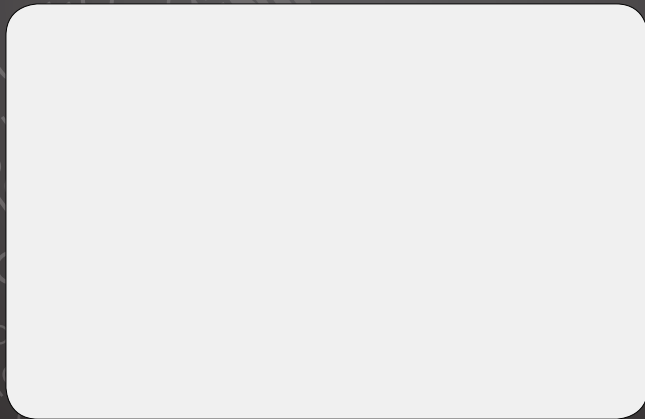
Right mudguard



Left mudguard



Wheel



TRIME

Lighting Tower **Specialist**

TRIME s.p.a.

Strada per Robecco, snc

20081 Cassinetta di Lugagnano (MI) - ITALY

Tel. +39 02 942 1724

www.trime.it - info@trime.it